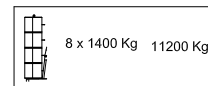
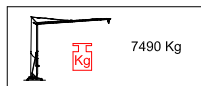


Peso del lastre / weight ballast



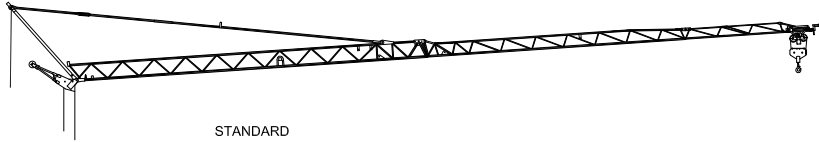
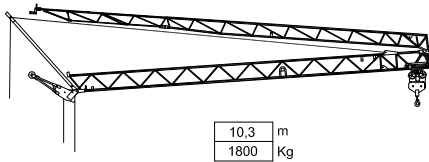
 Peso de la grúa sin lastre / Dead weight without ballast / Kontruklionsgewicht ohne ballast / Poids de construction sans lest / Peso della gru senza zavorra




**DIN/FEM**   
EN 14439-FEM 1005  
C25 D25 C50 D50





Curvas de cargas - Load diagrams - Lastkurven - Courbes de charges - Curve di carico - График грузоподъёмности



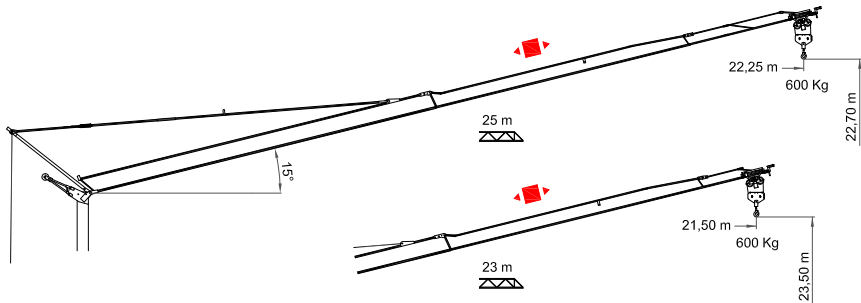
STANDARD

25 m	10,3	14	16	18	20	23	25	m
	1800	1265	1085	945	840	750	600	Kg


23 m	13,3	14	16	18	20	23	m
	1800	1425	1225	1070	950	850	Kg


20 m	14	16	18	20	m
	1800	1290	1130	1000	Kg

Flecha izada - Luffing jib - Ausleger in steilstellung - Flèche relevée - Braccio impennato





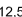



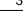










25 m	0	22,25	m
		600	Kg

23 m	0	21,50	m
		600	Kg



20 m	0	19,35	m
		600	Kg

Mecanismos - Mechanisms - Antriebe - Mécanismes - Meccanismi - Приводы



7.3Hp (5.5Kw) INV HBG 18m S/R Ø8mm									
	105m	m/min	4 	6,5 	12,5 	25 	35 		
		Kg	1800	1300	600				
		230V	3,5KW						
		m/mln	4 	12,5 	35 				
		Kg	1800	1300	600				
	m/min		37						
	Kw		1,1						
	r.p.m	0,25	0,5	0,8					
	N.m.	25							
	Kw		2,2						

-  Elevación / Hoisting / Heben / Levage / Sollevamento
-  Distribución / Trolleying / Katzfahren / Distribution / Distributions
-  Orientación / Slewing / Schwenken / Orientation / Rotazione
-  Montaje / Erecton / Montage / Montage / Montaggio

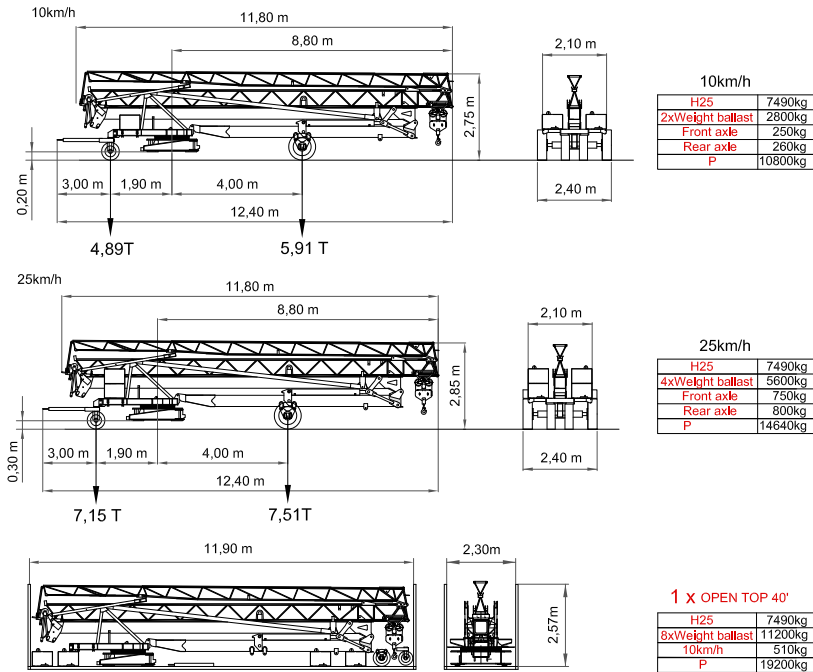
7.3Hp (5.5Kw) - INV

		400V 50Hz I <sub>max</sub> = 14A Fuse= 16A 480V 60Hz I <sub>max</sub> = 11A Fuse= 15A	TOTAL POWER 11 KVA	GENERATOR 14 KVA	100m 4x6mm <sup>2</sup>	150m 4x6mm <sup>2</sup>	200m 4x6mm <sup>2</sup>
---	---	--	-----------------------	---------------------	----------------------------	----------------------------	----------------------------

4.1Hp (4.2 Kw) - INV

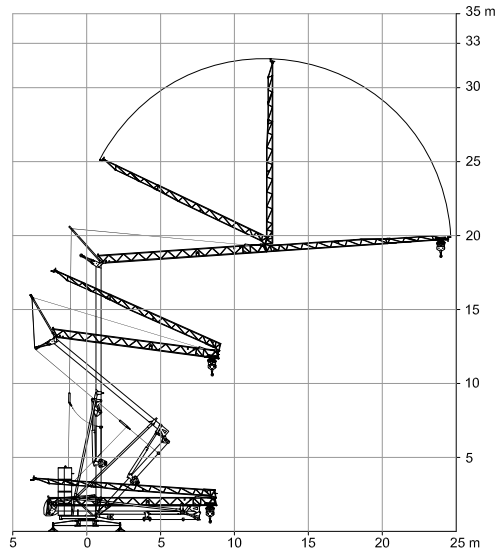
		230V 50Hz I <sub>max</sub> = 32A Fuse= 32A	TOTAL POWER 7,4 KVA	GENERATOR 14 KVA	100m 5x6mm <sup>2</sup>	150m 5x6mm <sup>2</sup>	200m 5x6mm <sup>2</sup>
---	---	--	------------------------	---------------------	----------------------------	----------------------------	----------------------------

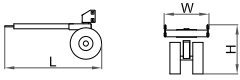
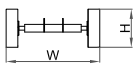
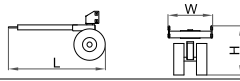
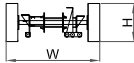
Dimensiones y transporte- dimensions and transport - Abmessungen und Transport- dimensions et des transporte - dimensioni e trasporti - Размеры и транспорта



## Montaje - Erection - Montage - Montage - Montaggio

H



			L (m)	W (m)	H (m)	Kg
<b>Eje de transporte delantero</b> Road transport axle front / Transportachse vorne / Essieux de transport avant / Asse di trasporto anteriore	10 km/h		1,96	0,96	1,00	250
<b>Eje de transporte trasero</b> / Road transport axle behind / Transportachse hinten / Essieux de transport arrière / Asse di trasporto posteriore	10 km/h		0,89	2,40	0,89	260
<b>Eje de transporte delantero</b> Road transport axle front / Transportachse vorne / Essieux de transport avant / Asse di trasporto anteriore	25 km/h		1,96	0,96	1,00	750
<b>Eje de transporte trasero con freno</b> Transportachse hinten mit brense Essieux de transport arrière avec frein Asse di trasporto posteriore con freno	25 km/h		1,25	2,40	1,35	800